



**VPL-3100 Residential Vertical Platform Lift**  
**Technical Specifications**

rev: 09-08-2008  
ILS-00834

**MODEL NUMBER:** VPL-3100 Series, Model VPL-3153 & VPL-3175  
**U.S. F.D.A. CLASSIFICATION:** Class II  
**CLASSIFICATION NUMBER:** 890.3930  
**PRODUCT CODE:** ING  
**CSA/C-US Listed:** File Number 208135

**PERFORMANCE STANDARDS:** USA Food & Drug Administration: None  
ANSI/ASME: A18.1-2003 Safety Standards for Platform Lifts and Stairway Chairlifts  
CSA B613-00 (JAN 2002) Private Residence lifts for Persons with physical Disabilities  
ANSI/ASME: CSA B44.1-04/ASME-A17.5-2004 Elevator and Escalator Electrical Equipment

**RATED LOAD:** 750 lbs maximum

**NUMBER OF PASSENGERS:** 1 passenger with mobility device

**DRIVE:** 1 hp motor; 1750 rpm, single phase, 120 VAC, 60 Hz, 13.4 Full Load Amps, 1.15 service factor, continuous duty

**INTERMEDIATE REDUCTION:** Dual 4L style Poly-V belts and pulleys, 3.94:1 pulley reduction

**FINAL DRIVE:** 1" DIA. ACME screw w/bronze nut and bronze safety back up nut

**MOTOR CONTROLLER:** 24VAC Relay control with 15 amp circuit breaker

**BRAKING:** Precision landing control with solenoid actuated screw braking

**STANDARD CONTROL:** Separate up and down pushbutton switches or paddle controls, continuous operation, key switch control

**EMERGENCY STOP SWITCH:** (Standard) Red, sealed, 1.55" diameter mushroom head, push to stop, pull to reset. (Optional) Red, sealed, 1.55" diameter mushroom head, illuminated with audio alarm, push to stop, pull to reset

**SPEED:** 9 feet per minute maximum

**LIFTING HEIGHT:** Model VPL-3153 has a 53" maximum floor to floor height, model VPL-3175 has a 75" maximum floor to floor height and a 28" minimum floor to floor height

**MAIN FRAME CONSTRUCTION:** Welded steel tubular guide construction w/formed sheet steel guarding

**CARRIAGE CONSTRUCTION:** Welded carriage with 2.0" dia. front and back sealed dual ball bearing wheels and adjustable low friction plastic side stabilizer guide pads

**PLATFORM CONSTRUCTION:** Totally enclosed side walls consisting of 1" tubular framing and sheet metal siding

**UNDER CARRIAGE SAFETY:** Totally enclosed bottom formed steel safety pan

**AUTOMATIC LOWER RAMP:** 16" long self lowering ramp

**MANUAL LOWER DEVICE:** Optional. Manual hand crank to lower device available. Access to adaptive shaft via safety interlocked machine top cap

**FINISH:** Exterior grade powder coat paint

**LIMIT SWITCHES:** Adjustable upper and lower limit switches and upper final limit switch

**REMOTE CONTROL:** Optional. Station includes a separate landing call and send pushbutton switches or paddle controls and a keyed on/off switch

**TOP LANDING GATE:** Optional. Includes Bruno mechanical interlock which releases door, only when platform is at upper landing. Electronic sensors stop platform from operating unless door is closed. Also includes call/send pushbutton switches or paddle controls and keyed on/off switch mounted into gate frame

**WEIGHT OF UNIT:** Model VPL-3153 is 752 lbs.  
Model VPL 3175 is 825 lbs.  
Top Landing Gate Option is 99 lbs.  
Top Landing Wide Gate Option is 108 lbs.

**TESTING PERFORMED:**

- 1) Life cycle test performed at manufacturer's location.
- 2) ASME A18.1/CSA B613-00 code tests performed at manufacturer's location.

## VPL Job Site Requirements

The following is a list of general job site requirements provided as a guide to help the installer. For a complete list of requirements check the installation site's applicable local codes.

### **Electrical Requirements:**

VPL requires a dedicated GFI 120 Volt, 15 amp, 60 Hz single phase circuit to operate. Check applicable local codes for all electrical and wiring requirements.

### **Platform Pathway Requirements:**

Make sure the pathway that the platform runs in is clear of any electrical conduit and wire ways, Make sure no liquids, steam or gas piping discharge into the pathway, and make sure that there is sufficient headroom clearance (minimum of 80") throughout floor to floor travel. Make sure the area is sufficiently lit.

### **Floor Requirements:**

4" thick, 3500 PSI minimum compressive strength, reinforced concrete slab. Refer to VPL-3100 technical drawing for minimum slab dimensions.

### **Floor Attachment:**

VPL must be fastened to concrete slab using four (4) 1/2" (3/8" bolt) x minimum 2 1/2" long concrete anchors suitable for the environment. Refer to VPL-3100 technical drawing for mounting hole locations. Follow selected concrete anchor manufacturers guidelines and applicable codes.

### **Housing Attachment:**

None required. Can use 5/16-18 tapped holes on tower frame work to fasten the tower housing to a vertical wall for additional stability. Note: housing must remain intact.

### **Top Gate Attachment:**

Refer to VPL gate technical drawing

### **Space Requirements:**

Refer to VPL-3100 technical drawing.

### **Platform to Top Landing Sill Clearance:**

ASME code indicates the platform floor-to-sill clearance at the upper landing shall not exceed 3/4 in. (19 mm). Follow applicable local codes.

### **Fascia Wall Requirements:**

ASME code indicates that fascia should be smooth and non-perforated that guards the full length and width of the platform. The fascia shall be securely fastened from the upper landing sill down to the lower landing sill. It should also be able to withstand a 125 pound side load over any 4 inch square area. Follow applicable local codes.

# BRUNO VERTICAL PLATFORM LIFT VPL-3100 SERIES

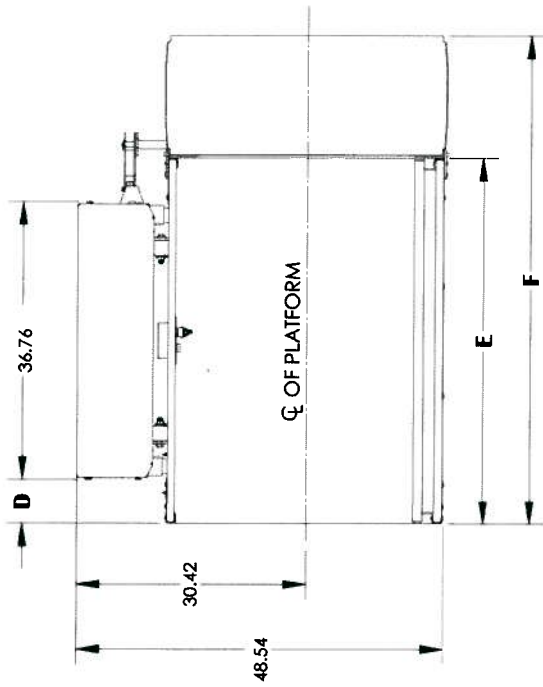
## STANDARD STRAIGHT THROUGH PLATFORM

### TECHNICAL DATA/SPECIFICATIONS

**RATED LOAD:** 750 lbs maximum.  
**POWER SOURCE:** 110-120 Volt 15 Amp 60 Hz dedicated service.  
**DRIVE:** 1 hp motor, 1750 rpm, single phase, 120 VAC, 1.15 service factor, continuous duty.  
**INTERMEDIATE REDUCTION:** Dual 4L style Poly-V belts and pulleys, 3.94:1 pulley reduction.  
**FINAL DRIVE:** 1" dia. ACME screw w/bronze nut and bronze safety back up nut  
**MOTOR CONTROLLER:** 24VAC Relay control.  
**BRAKING:** Precision landing control with solenoid actuated screw braking.  
**STANDARD CONTROL:** Separate up and down push button switches, continuous operation, key switch control.  
**EMERGENCY STOP SWITCH:** Red, sealed, 1.55" diameter mushroom head, push to stop, pull to reset.  
**SPEED:** 9 feet per minute maximum.  
**LIFTING HEIGHT:** Model VPL-3153 has a 53" maximum floor to floor height, and Model VPL-3175 has a 75" maximum floor to floor height, and a 28" minimum floor to floor height.

### PERFORMANCE STANDARDS

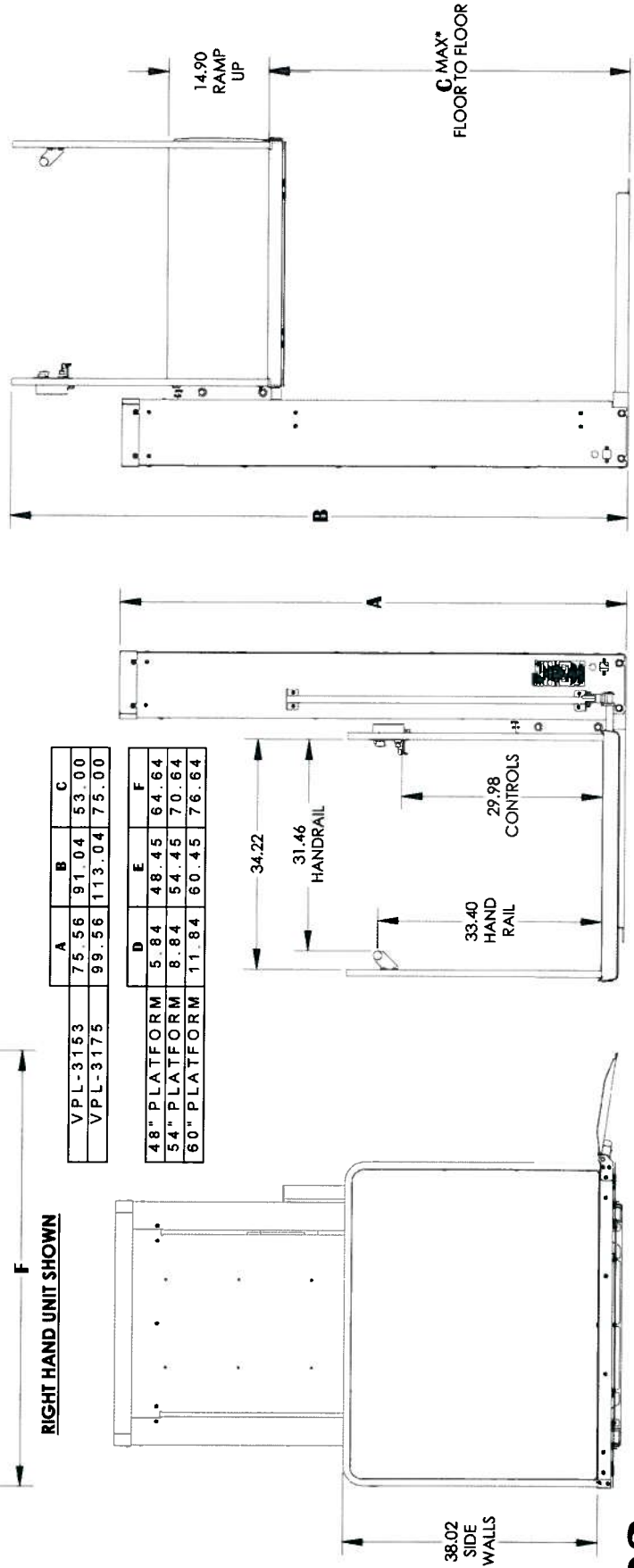
**USA FOOD & DRUG ADMINISTRATION:** None  
**ANSI/ASME:** A18.1-2003 Safety Standards for Platform lifts and Stairway Chairlifts  
**CSA B613-00 (JAN 2002)** Private Residence Lifts for Persons with Physical Disabilities  
**ANSI/ASME:** CSA B44.1-04/ASME-A17.5-2004 Elevator and Escalator Electrical Equipment



RIGHT HAND UNIT SHOWN

	A	B	C
VPL-3153	75.56	91.04	53.00
VPL-3175	99.56	113.04	75.00

	D	E	F
48" PLATFORM	5.84	48.45	64.64
54" PLATFORM	8.84	54.45	70.64
60" PLATFORM	11.84	60.45	76.64



NOTES: 1) ACCESS RAMP CAN BE MOUNTED ON RIGHT OR LEFT OF THE PLATFORM  
 2) SEE SHEET 3 FOR UNIT ANCHOR POINTS

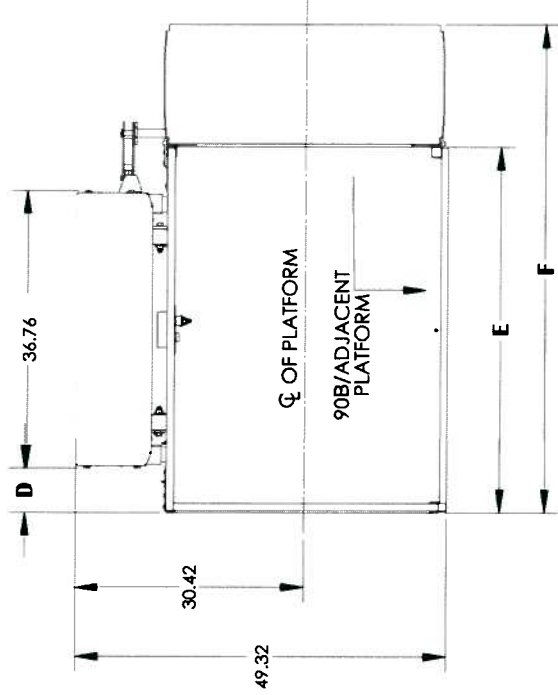
**ILS-00803**  
**SHEET 1 OF 6**  
**REV. 9-8-2008**

Bruno Independent Living Aids, Inc., 1780 Executive Drive, P.O. Box 84, Oconomowoc, WI 53066  
 Phone (800) 882-8183 Fax (262) 953-5501  
 Any reproduction or other use of these materials without written permission of Bruno Independent Living Aids, Inc. is expressly prohibited.  
 Bruno Independent Living Aids, Inc. reserves the right to modify or make changes to these specifications at any time without notice.

\*MIN. FLOOR TO FLOOR OF VPL-3175 IS 28"  
  
**BRUNO**<sup>TM</sup>  
 for your independence  
 ©2008 Bruno Independent Living Aids, Inc.

# BRUNO VERTICAL PLATFORM LIFT VPL-3100 SERIES

## 90° / ADJACENT EXIT PLATFORM

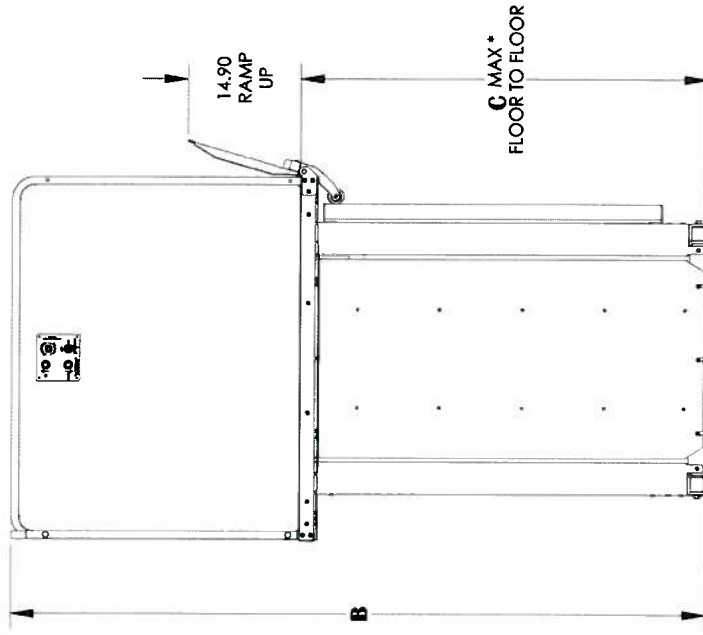


RIGHT HAND UNIT SHOWN

	A	B	C
VPL-3153	75.56	91.04	53.00
VPL-3175	99.56	113.04	75.00

	D	E	F
48" PLATFORM	5.84	48.45	64.64
54" PLATFORM	8.84	54.45	70.64



### TECHNICAL DATA/SPECIFICATIONS

**RATED LOAD:** 750 lbs maximum  
**POWER SOURCE:** 110-120 Volt 15 Amp 60 Hz dedicated service.  
**DRIVE:** 1 hp motor; 1750 rpm, single phase, 120 VAC, 1.15 service factor, continuous duty.  
**INTERMEDIATE REDUCTION:** Dual 4L style Poly-V belts and pulleys, 3.94:1 pulley reduction.  
**FINAL DRIVE:** 1" dia. ACME screw w/bronze nut and bronze safety back up nut  
**MOTOR CONTROLLER:** 24VAC Relay control.  
**BRAKING:** Precision landing control with solenoid actuated screw braking.  
**STANDARD CONTROL:** Separate up and down push button switches, continuous operation, key switch control.  
**EMERGENCY STOP SWITCH:** Red, sealed, 1.55" diameter mushroom head, push to stop, pull to reset.  
**SPEED:** 9 feet per minute maximum.  
**LIFTING HEIGHT:** Model VPL-3153 has a 53" maximum floor to floor height, and Model VPL-3175 has a 75" maximum floor to floor height, and a 28" minimum floor to floor height.

### PERFORMANCE STANDARDS

**USA FOOD & DRUG ADMINISTRATION:** None  
**ANSI/ASME:** A18.1-2003 Safety Standards for Platform lifts and Stairway Chairlifts  
**ANSI/ASME:** CSA B613-00 (JAN 2002) Private Residence Elevator and Escalator Electrical Equipment  
**ANSI/ASME:** CSA B44.1-04/ASME-A17.5-2004 Elevator and Escalator Electrical Equipment

\* MIN. FLOOR TO FLOOR OF VPL-3175 IS 28"

NOTES: 1) ACCESS RAMP CAN BE MOUNTED ON RIGHT OR LEFT OF THE PLATFORM  
 2) SEE SHEET 3 FOR UNIT ANCHOR POINTS

**ILS-00803**  
**SHEET 2 OF 6**  
**REV. 9-8-2008**

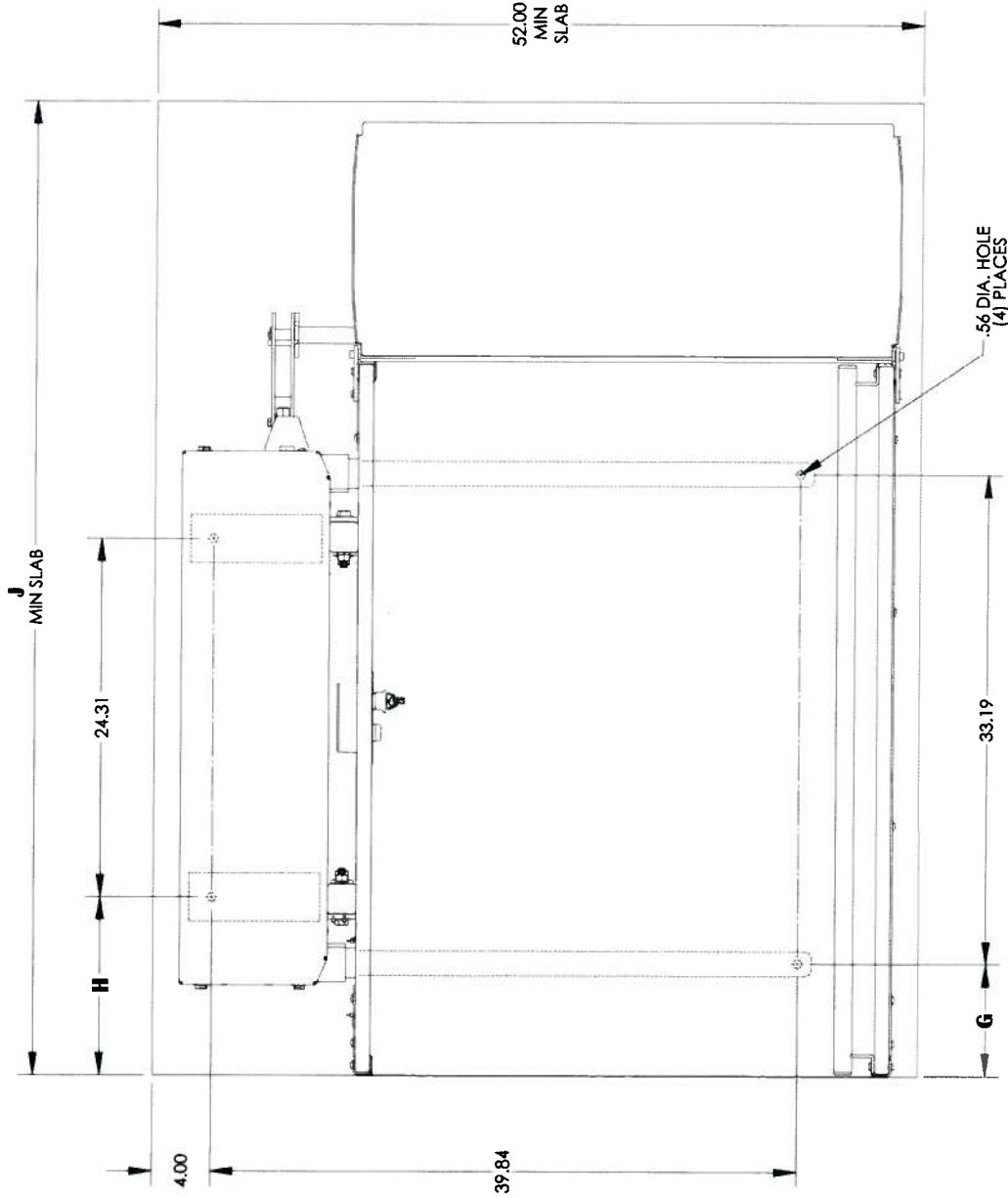
Bruno Independent Living Aids, Inc., 1780 Executive Drive, P.O. Box 84, Oconomowoc, WI 53066  
 Phone (800) 882-8183 Fax (262) 953-5501  
 Any reproduction or other use of these materials without written permission of Bruno Independent Living Aids, Inc. is expressly prohibited.  
 Bruno Independent Living Aids, Inc. reserves the right to modify or make changes to these specifications at any time with out notice.



# BRUNO VERTICAL PLATFORM LIFT VPL-3100 SERIES

## ANCHOR POINT LOCATIONS

	G	H	J
48" PLATFORM	7.60	12.04	66.00
54" PLATFORM	10.60	15.04	72.00
60" PLATFORM	13.60	18.04	78.00



COMMON FOR UNITS WITH STRAIGHT THROUGH OR 90B /ADJACENT EXIT PLATFORMS

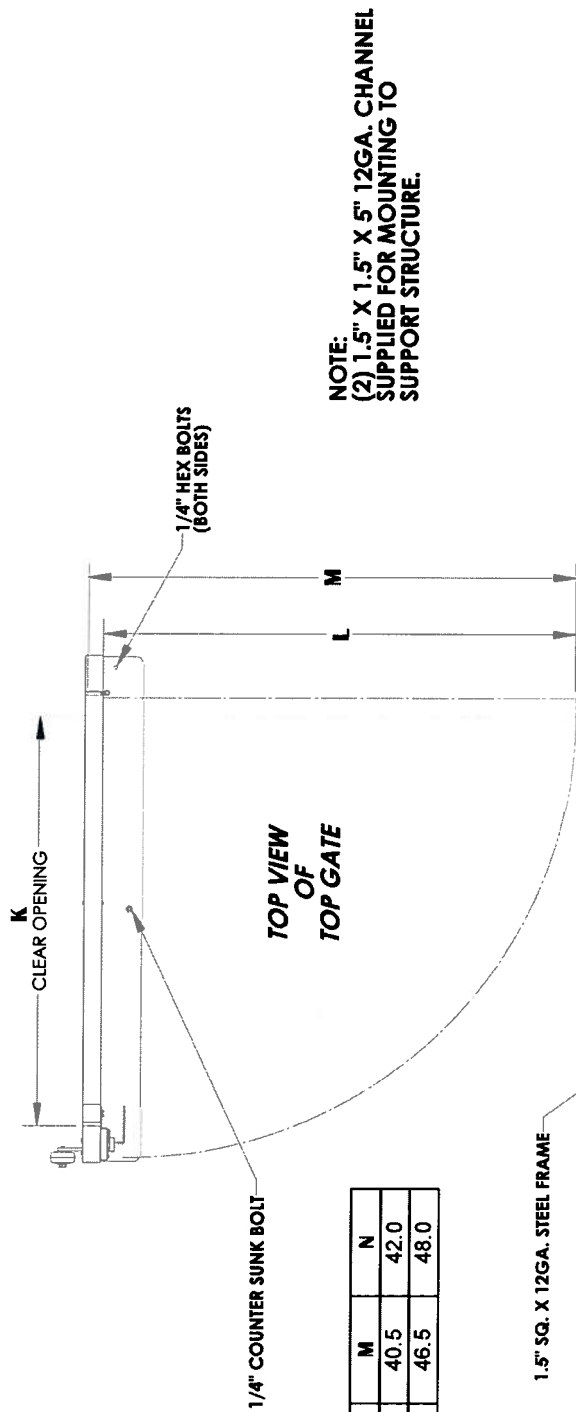
**ILS-00803**  
**SHEET 3 OF 6**  
**REV. 9-8-2008**

Bruno Independent Living Aids, Inc., 1780 Executive Drive, P.O. Box 84, Oconomowoc, WI 53066  
 Phone (800) 882-8163 Fax (262) 953-5501  
 Any reproduction or other use of these materials without written permission of Bruno Independent Living Aids, Inc. is expressly prohibited.  
 Bruno Independent Living Aids, Inc. reserves the right to modify or make changes to these specifications at any time with out notice.



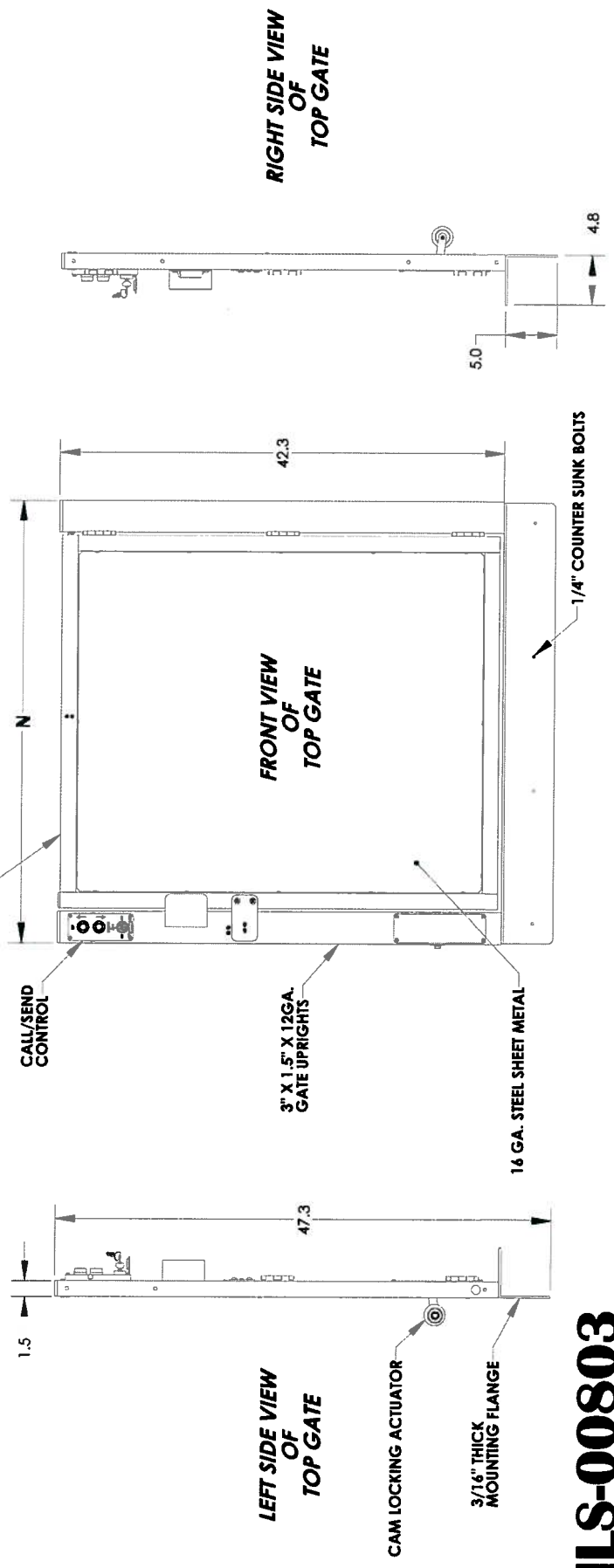
# BRUNO VERTICAL PLATFORM LIFT VPL-3100 SERIES

## LEFT HAND GATE DETAIL - VIEWED AT TOP LANDING



**NOTE:**  
 (2) 1.5" X 1.5" X 5" 12GA. CHANNEL  
 SUPPLIED FOR MOUNTING TO  
 SUPPORT STRUCTURE.

	K	L	M	N
34" GATE	34.0	38.5	40.5	42.0
40" GATE	40.0	44.5	46.5	48.0



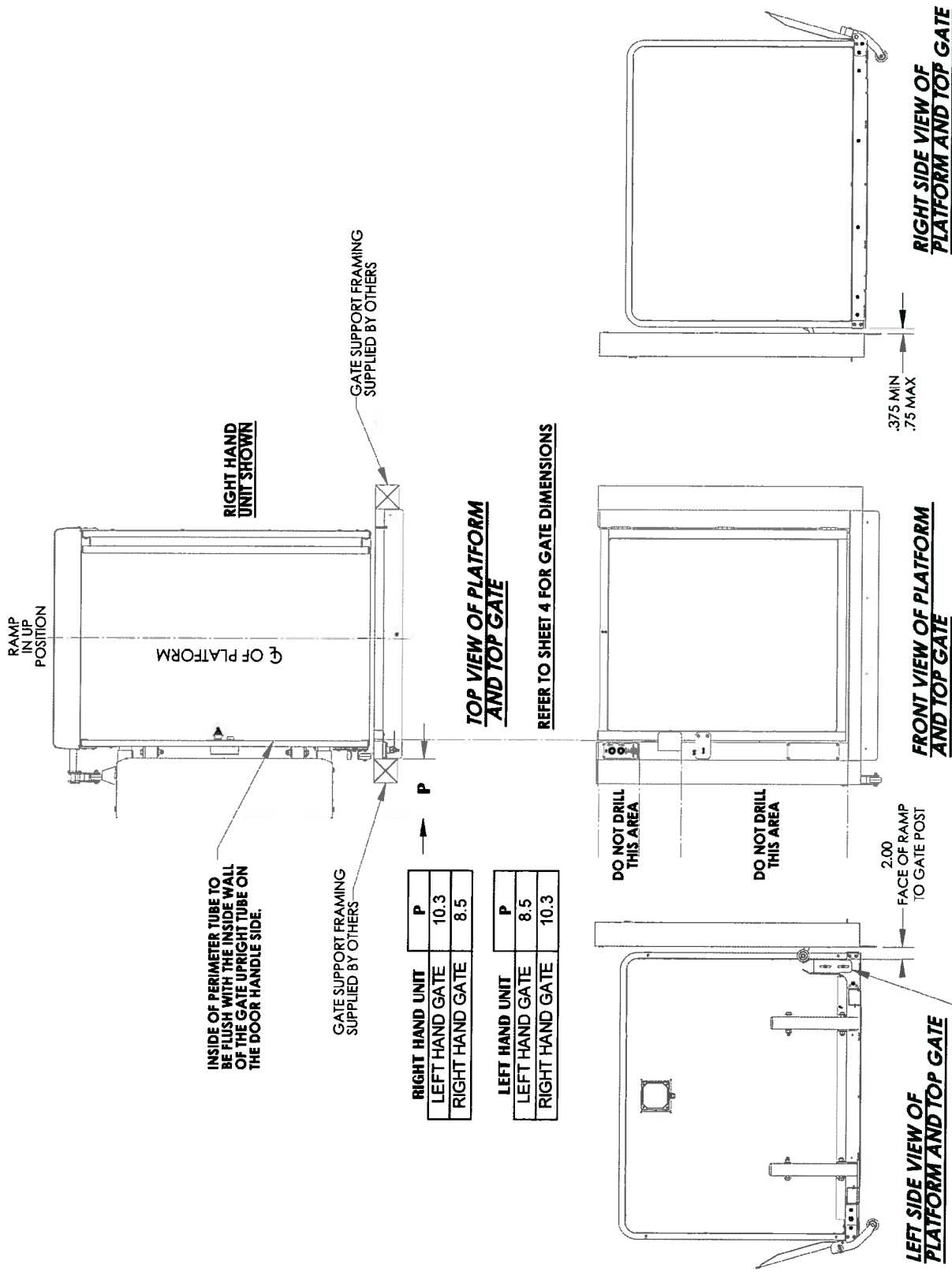
**ILS-00803**  
**SHEET 4 OF 6**  
**REV. 9-8-2008**

Bruno Independent Living Aids, Inc., 1780 Executive Drive, P.O. Box 84, Oconomowoc, WI 53066  
 Phone (800) 882-8183 Fax (262) 753-5501  
 A disclaimer or other use of these materials without written permission of Bruno Independent Living Aids, Inc. is expressly prohibited.  
 Bruno Independent Living Aids, Inc. reserves the right to modify or make changes to these specifications at any time with out notice.



# BRUNO VERTICAL PLATFORM LIFT VPL-3100 SERIES

## GATE ALIGNMENT - VIEWED AT TOP LANDING

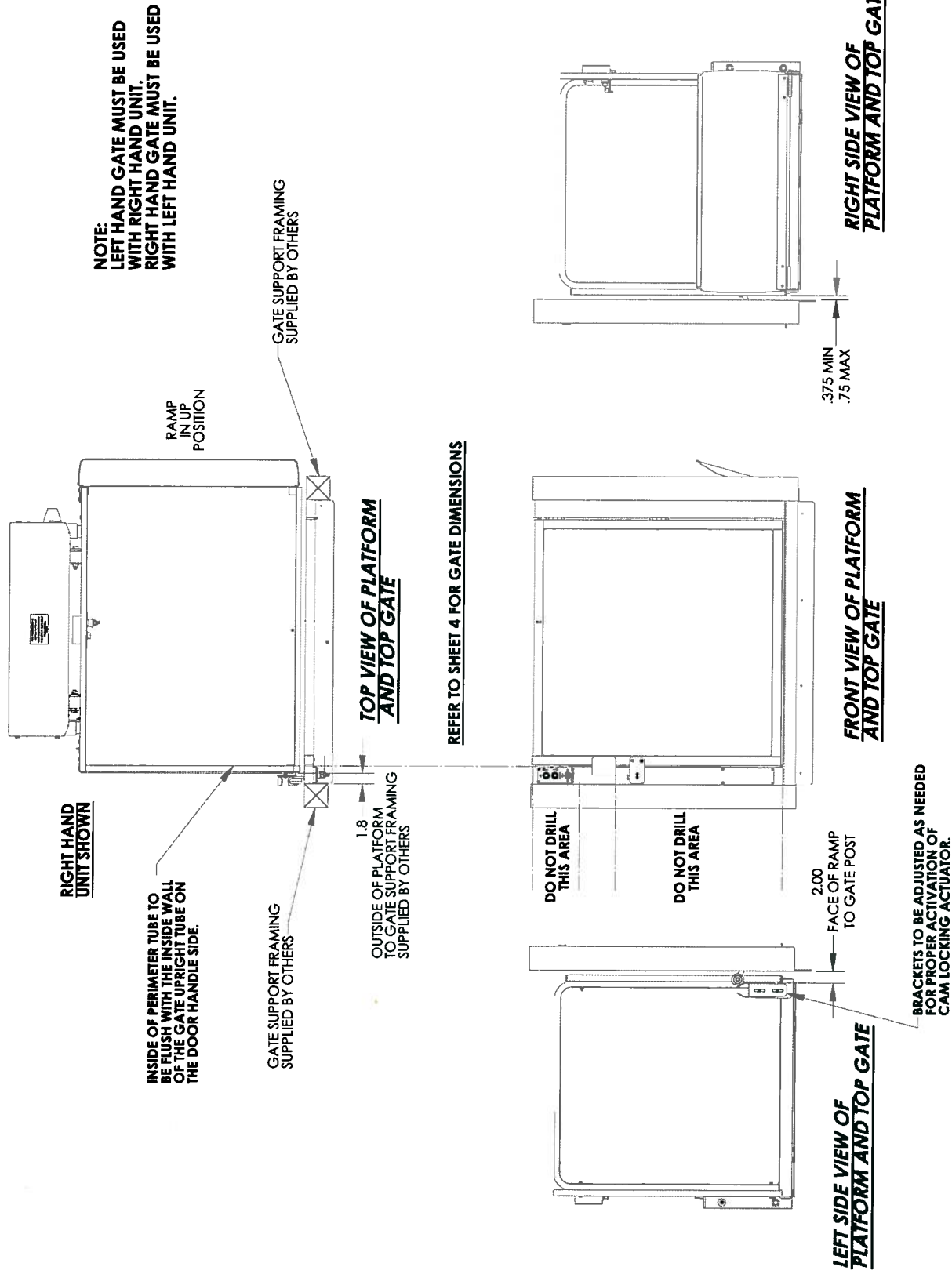


**ILS-00803**  
**SHEET 5 OF 6**  
**REV. 9-8-2008**

Bruno Independent Living Aids, Inc., 1780 Executive Drive, P.O. Box 84, Oconomowoc, WI 53066  
 Phone (800) 882-8183 Fax (262) 953-5501  
 Any reproduction or other use of these materials without written permission of Bruno Independent Living Aids, Inc. is expressly prohibited.  
 Bruno Independent Living Aids, Inc. reserves the right to modify or make changes to these specifications at any time with out notice.

# BRUNO VERTICAL PLATFORM LIFT VPL-3100 SERIES

## GATE ALIGNMENT - VIEWED AT TOP LANDING



**ILS-00803**  
**SHEET 6 OF 6**  
**REV. 9-8-2008**

Bruno Independent Living Aids, Inc., 1780 Executive Drive, P.O. Box 84, Oconomowoc, WI 53066  
Phone (800) 882-8183 Fax (262) 953-5501

Any reproduction or other use of these materials without written permission of Bruno Independent Living Aids, Inc. is expressly prohibited.  
Bruno Independent Living Aids, Inc. reserves the right to modify or make changes to these specifications at any time.



for your independence